

Part Number: M-5478-6M
Mustang Drive Shaft Loop Kit
INSTALLATION INSTRUCTIONS

NO PART OF THIS DOCUMENT MAY BE REPRODUCED WITHOUT PRIOR AGREEMENT AND WRITTEN PERMISSION OF FORD PERFORMANCE PARTS.

Please visit www.fordracingparts.com for the most current instruction information

!!! PLEASE READ ALL OF THE FOLLOWING INSTRUCTIONS CAREFULLY PRIOR TO INSTALLATION. AT ANY TIME YOU DO NOT UNDERSTAND THE INSTRUCTIONS, PLEASE CALL THE FORD PERFORMANCE TECHLINE AT 1-800-367-3788!!!

OVERVIEW:

The use of a floor hoist is recommended for this installation. If you do not have access to one, use a hydraulic floor jack and jack stands to raise the vehicle.

!!!CAUTION: JACK STANDS MUST BE USED ON A LEVEL SURFACE AND BE SECURELY SEATED. FAILURE TO DO SO MAY RESULT IN PERSONAL INJURY OR VEHICLE DAMAGE!!!

KIT INCLUDES:

Qty: 1 Two piece drive shaft loop
Qty: 1 Hardware kit



Part Number: M-5478-6M Mustang Drive Shaft Loop Kit INSTALLATION INSTRUCTIONS

NO PART OF THIS DOCUMENT MAY BE REPRODUCED WITHOUT PRIOR AGREEMENT AND WRITTEN PERMISSION OF FORD PERFORMANCE PARTS.

WARNING: Depowering of the SRS system MUST be completed before continuing with the installation of this kit.

Supplemental Restraint System (SRS) Depowering

Depower

⚠ WARNING: Incorrect repair techniques or actions can cause an accidental Supplemental Restraint System (SRS) deployment. Never compromise or depart from these instructions. Failure to precisely follow all instructions could result in serious personal injury from an accidental deployment.

- ⚠ WARNING: Before beginning any service procedure in this section, refer to Safety Warnings in section 100-00 General Information. Failure to follow this instruction may result in serious personal injury.**
- Determine if a SRS fault is present. Turn the ignition OFF and wait 10 seconds, then turn the ignition ON and monitor the airbag warning indicator. The airbag warning indicator illuminates continuously for approximately 6 seconds and then turns off. Continue to monitor the airbag warning indicator for approximately 30 seconds as this is the time required for the RCM to complete testing of the SRS.
- If a SRS fault is present the airbag warning indicator either fails to light, remains lit continuously or flashes. The flashing may not occur until approximately 30 seconds after the ignition has been turned from OFF to ON. If this occurs, diagnose and repair any SRS faults before proceeding with other repairs.
 - If after the ignition has been turned ON for 30 seconds the airbag warning indicator remains unlit with no chime or SRS message displayed in the message center, no SRS fault is present.
 - If the airbag warning indicator is inoperative and a SRS fault exists, a chime sounds in a pattern of 5 sets of 5 beeps or a message displays in the message center. If this occurs, diagnose and repair the airbag warning indicator and any SRS faults before proceeding with other repairs.

No SRS Fault Present (with ignition ON, airbag warning indicator stays off after prove out)

- ⚠ WARNING: Turn the ignition OFF and wait one minute to deplete the backup power supply. Ignition must remain OFF until repair is complete. Failure to follow this instruction may result in serious personal injury or death in the event of an accidental deployment.**

Turn the ignition OFF and wait one minute before continuing vehicle service.

Part Number: M-5478-6M Mustang Drive Shaft Loop Kit INSTALLATION INSTRUCTIONS

NO PART OF THIS DOCUMENT MAY BE REPRODUCED WITHOUT PRIOR AGREEMENT AND WRITTEN PERMISSION OF FORD PERFORMANCE PARTS.

SRS Fault Present

5. Turn the ignition OFF.
6. Remove the RCM fuse. Refer to Wiring Diagram Cell 11/Section 700-01 for fuse and relay information.
7. Turn the ignition ON.
8. Using a diagnostic scan tool, carry out a Network Test. Verify that the RCM does not respond to the Network Test. If the RCM passes the Network Test, remove the correct RCM fuse and repeat the Network Test to verify before proceeding.
9. Turn the ignition OFF.
11. Disconnect the battery.
12. Wait at least one minute before continuing vehicle service.

Repower the SRS.

Refer to: **Supplemental Restraint System (SRS) Repowering** (501-20B Supplemental Restraint System, General Procedures)
Supplemental Restraint System (SRS) Repowering

Repower

⚠ WARNING: Incorrect repair techniques or actions can cause an accidental Supplemental Restraint System (SRS) deployment. Never compromise or depart from these instructions. Failure to precisely follow all instructions could result in serious personal injury from an accidental deployment.

NOTE: *The SRS must be fully operational and free of faults before releasing the vehicle to the customer.*

1. **⚠ WARNING: Before beginning any service procedure in this section, refer to Safety Warnings in section 100-00 General Information. Failure to follow this instruction may result in serious personal injury.**

No SRS Fault Present At Beginning of Repair

2. Prove out the SRS. Verify all airbags are installed and connected and the ignition is OFF. Wait 10 seconds then turn the ignition ON and monitor the airbag warning indicator. The airbag warning indicator illuminates continuously for approximately 6 seconds and turns off. Continue to monitor the airbag warning indicator for approximately 30 seconds as this is the time required for the RCM to complete testing of the SRS.

Part Number: M-5478-6M Mustang Drive Shaft Loop Kit INSTALLATION INSTRUCTIONS

NO PART OF THIS DOCUMENT MAY BE REPRODUCED WITHOUT PRIOR AGREEMENT AND WRITTEN PERMISSION OF FORD PERFORMANCE PARTS.

3.
 - If a SRS fault is present, the airbag warning indicator either fails to light, remains lit continuously or flashes. The flashing may not occur until approximately 30 seconds after the ignition has been turned from OFF to ON. If this occurs, diagnose and repair any SRS faults before proceeding with other repairs.
 - If, after the ignition has been turned on for 30 seconds, the airbag warning indicator remains unlit with no chime or SRS message displayed in the message center, no SRS fault is present.
 - If the airbag warning indicator is inoperative and a SRS fault exists, a chime sounds in a pattern of 5 sets of 5 beeps or a message displays in the message center. If this occurs, diagnose and repair the airbag warning indicator and any SRS faults before proceeding with other repairs.

SRS Fault Present At Beginning of Repair

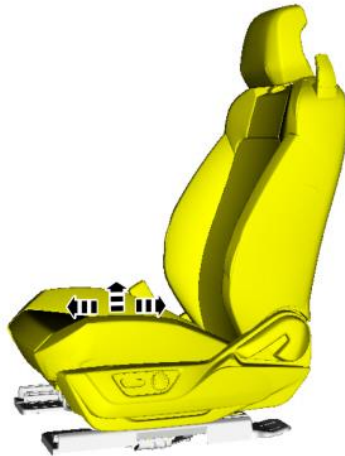
4. Verify the ignition is OFF.
5. Install the RCM fuse. Refer to Wiring Diagram Cell 11/Section 700-01 for fuse and relay information.
6. Connect the battery.
7. Sit in the driver seat in an upright position. Make sure no objects are between you and any pyrotechnic device. Move the driver seat to the rearmost position to maintain the maximum possible distance from the driver airbag.
8. Turn the ignition from OFF to ON.
9. Prove out the SRS. Verify all airbags are installed and connected and the ignition is OFF. Wait 10 seconds, then turn the ignition ON and monitor the airbag warning indicator. The airbag warning indicator illuminates continuously for approximately 6 seconds and then turns off. Continue to monitor the airbag warning indicator for approximately 30 seconds, as this is the time required for the RCM to complete testing of the SRS.
10.
 - If a SRS fault is present, the airbag warning indicator either fails to light, remains lit continuously or flashes. The flashing may not occur until approximately 30 seconds after the ignition has been turned from OFF to ON. If this occurs, diagnose and repair any SRS faults before proceeding with other repairs.
 - If, after the ignition has been turned on for 30 seconds, the airbag warning indicator remains unlit with no chime or SRS message displayed in the message center, no SRS fault is present.
 - If the airbag warning indicator is inoperative and a SRS fault exists, a chime sounds in a pattern of 5 sets of 5 beeps or a message displays in the message center. If this occurs, diagnose and repair the airbag warning indicator and any SRS faults before proceeding with other repairs.
11. Using a scan tool, clear all Continuous Memory Diagnostic Trouble Codes (CMDTCs) from all modules.

Part Number: M-5478-6M Mustang Drive Shaft Loop Kit INSTALLATION INSTRUCTIONS

NO PART OF THIS DOCUMENT MAY BE REPRODUCED WITHOUT PRIOR AGREEMENT AND WRITTEN PERMISSION OF FORD PERFORMANCE PARTS.

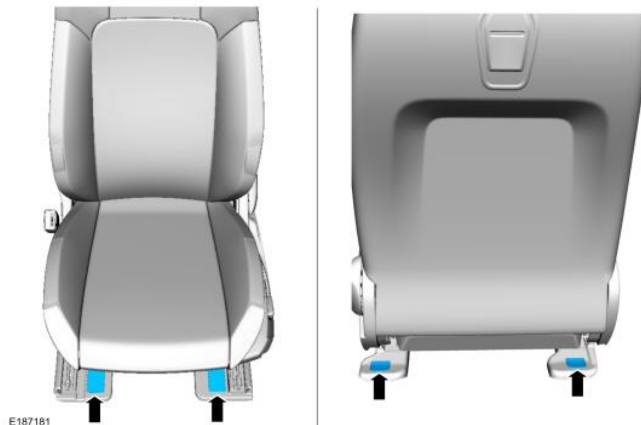
Front Seat Removal

1. Position the seat to access the front seat bolts.



E187122

2. Remove the front seat shield bolt caps.

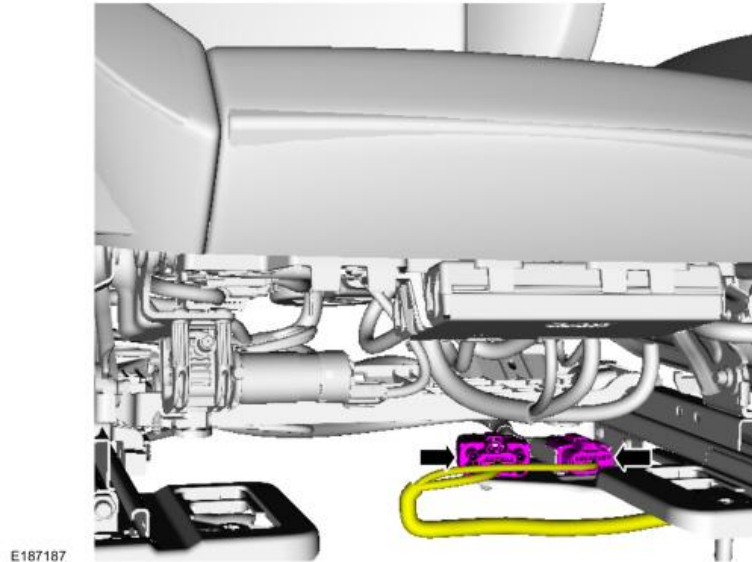


E187181

Part Number: M-5478-6M Mustang Drive Shaft Loop Kit INSTALLATION INSTRUCTIONS

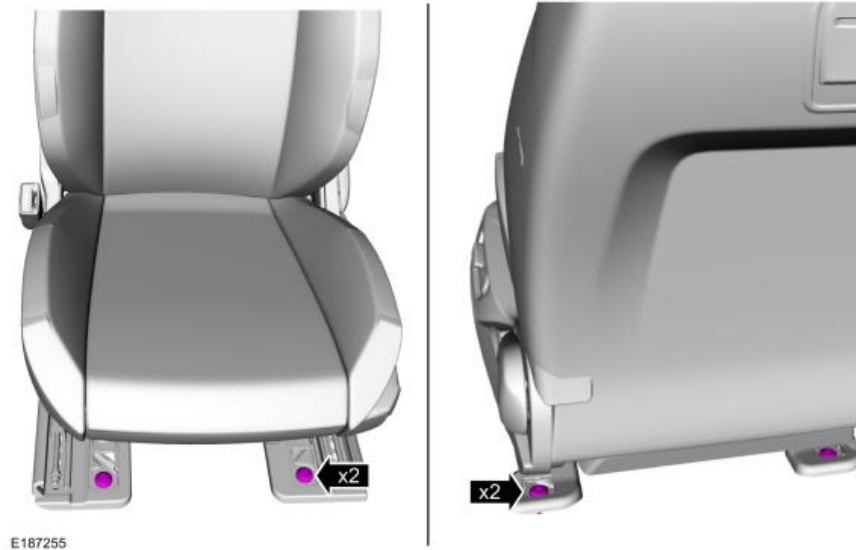
NO PART OF THIS DOCUMENT MAY BE REPRODUCED WITHOUT PRIOR AGREEMENT AND WRITTEN PERMISSION OF FORD PERFORMANCE PARTS.

3. Disconnect the front seat electrical connector(s) and position the wire harness aside.



4. **NOTE:** Follow the unique instructions or graphic for this step in the installation.

Remove the bolts and the front seat and remove both seats.

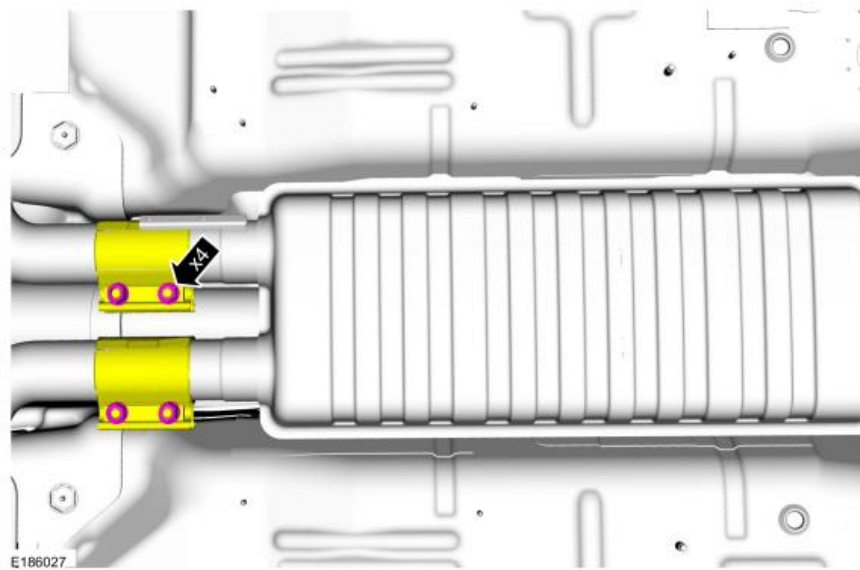


Part Number: M-5478-6M Mustang Drive Shaft Loop Kit INSTALLATION INSTRUCTIONS

NO PART OF THIS DOCUMENT MAY BE REPRODUCED WITHOUT PRIOR AGREEMENT AND WRITTEN PERMISSION OF FORD PERFORMANCE PARTS.

Muffler Inlet Pipe Removal

1. Loosen the clamps and separate the muffler and tailpipe from the RH catalytic converter and LH muffler inlet pipe.
Torque: 35 lb.ft (48 Nm)



2. Let muffler and tailpipe hang at this time.

Part Number: M-5478-6M Mustang Drive Shaft Loop Kit INSTALLATION INSTRUCTIONS

NO PART OF THIS DOCUMENT MAY BE REPRODUCED WITHOUT PRIOR AGREEMENT AND WRITTEN PERMISSION OF FORD PERFORMANCE PARTS.

Drive Shaft Loop Installation

1. With the two front seats removed along with the muffler hanging position the main bracket to the underside of the vehicle and mark the 4 holes.
2. Drill (4) 5/16" holes. Be careful not to snag the floor covering.

Rear of vehicle



Front of vehicle



Factory Ford shop manuals are available from Helm Publications, 1-800-782-4356 Or www.helminc.com

Part Number: M-5478-6M Mustang Drive Shaft Loop Kit INSTALLATION INSTRUCTIONS

NO PART OF THIS DOCUMENT MAY BE REPRODUCED WITHOUT PRIOR AGREEMENT AND WRITTEN PERMISSION OF FORD PERFORMANCE PARTS.

3. Insert stud plate under carpet and thru holes on both side of vehicle.

Insert stud plates here on both side of vehicle.



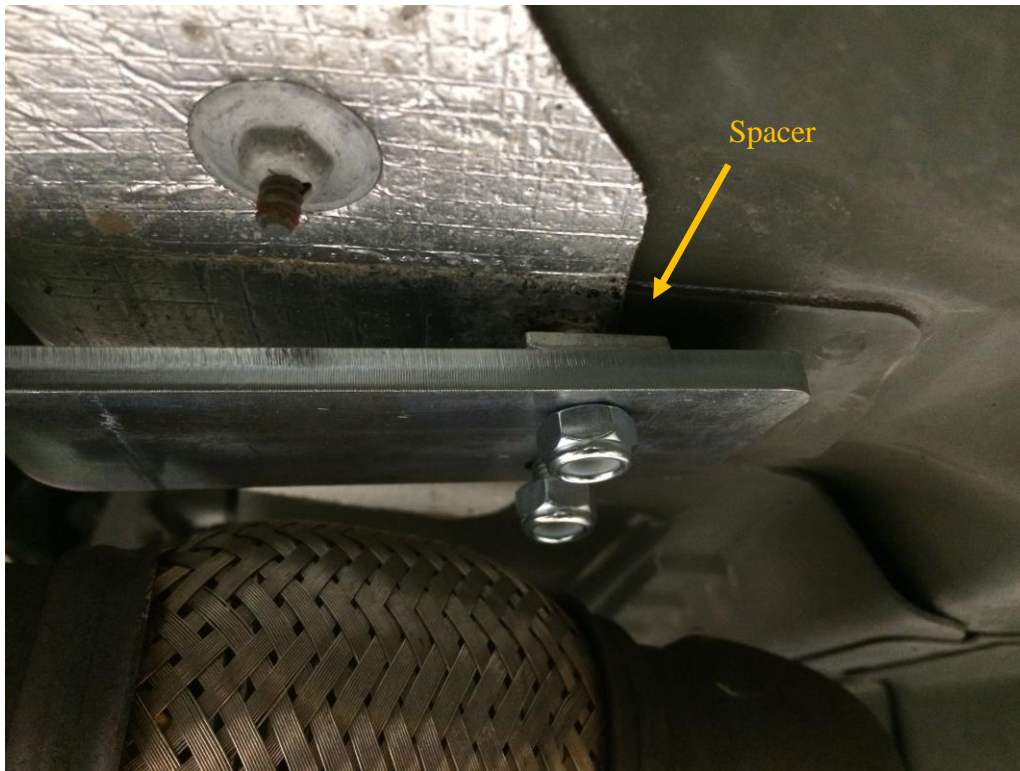
4. Position loop around driveshaft and let hang for the moment.
5. Position main mount into loop and tighten all 4 bolts. (25 lb.ft)



Part Number: M-5478-6M
Mustang Drive Shaft Loop Kit
INSTALLATION INSTRUCTIONS

NO PART OF THIS DOCUMENT MAY BE REPRODUCED WITHOUT PRIOR AGREEMENT AND WRITTEN PERMISSION OF FORD PERFORMANCE PARTS.

6. Position drive shaft loop into nut plates as shown with spacer on the rear bolt on both side of vehicle.
7. Tighten all 4 bolts. (25 lb.ft)



NO PART OF THIS DOCUMENT MAY BE REPRODUCED WITHOUT PRIOR AGREEMENT AND WRITTEN PERMISSION OF FORD PERFORMANCE PARTS.

Muffler Inlet Pipe Installation

1. To install, reverse the removal procedure from the beginning of the instructions.

Front Seat Installation

1. To install, reverse the removal procedure.
2. Install the front seat bolts in the following sequence.
 1. Install the front inboard bolt.
Torque: 35 lb.ft (47 Nm)
 2. Install the front outboard bolt.
Torque: 35 lb.ft (47 Nm)
 3. Install the rear inboard bolt.
Torque: 35 lb.ft (47 Nm)
 4. Install the rear outboard bolt.
Torque: 35 lb.ft (47 Nm)



E187257

