

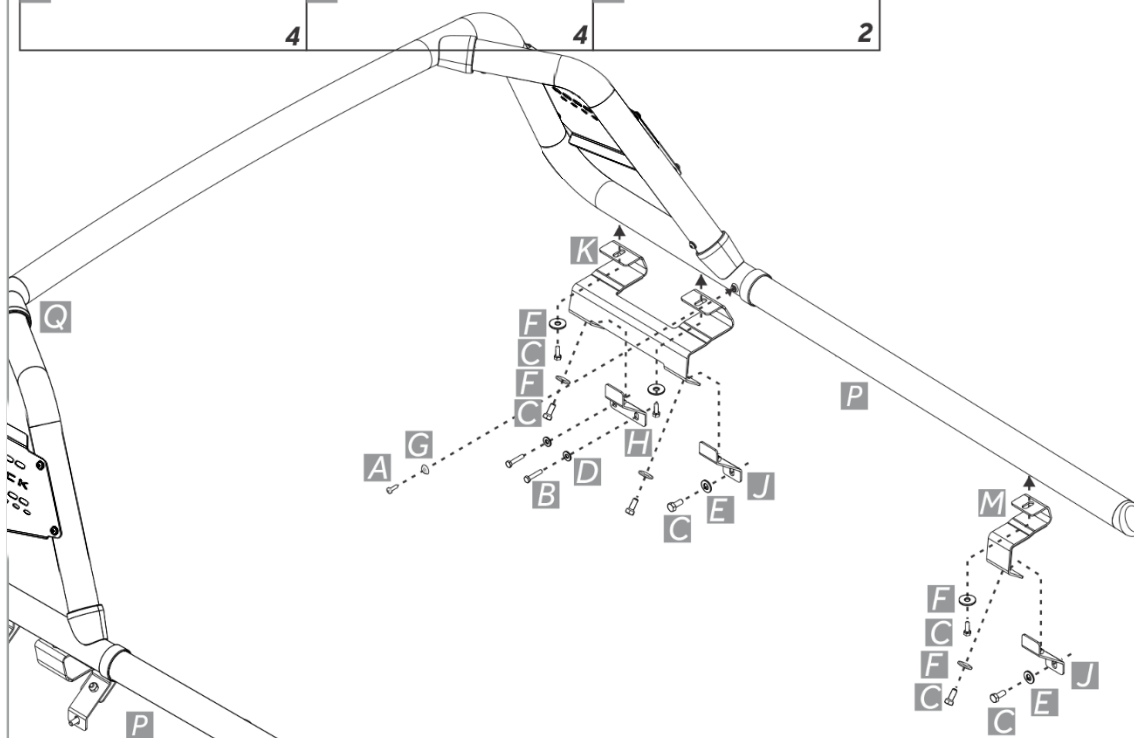
NO PART OF THIS DOCUMENT MAY BE REPRODUCED WITHOUT PRIOR AGREEMENT AND WRITTEN PERMISSION OF
FORD PERFORMANCE PARTS © Ford Motor Company 2020

PRIOR TO INSTALLATION READ THESE INSTRUCTION COMPLETELY
For questions, Call the FORD PERFORMANCE Techline 1-800-367-3788

Please visit <https://www.performanceparts.ford.com> for warranty information

COMPONENTS

A 4,8x19 Phillips Bolt 2	F M8x2,0x24 Flat Washer 12	K Right Front Bracket 2	P Extender 2
B M6x1,00x30 Hex. Bolt 4	G 4,8x28 Plastic Washer 2	L Left Front Bracket 2	Q 2" Light Bar 2
C M8x1,25x20 Hex. Bolt 16	H Right Front Lock 2	M Extender Bracket 2	
D M6x1,6x14 Flat Washer 4	I Left Front Lock 2	N EVA Front Bracket 2	
E M8x17 Flat Washer 4	J Rear Lock 2	O EVA Extender Bracket 2	



- This accessory is incompatible with the Rear Cab Spoiler.



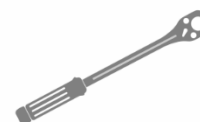
TOOLS



Phillips Wrench

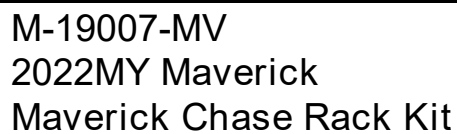


Wrench 10y 13

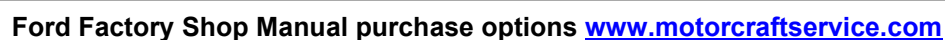
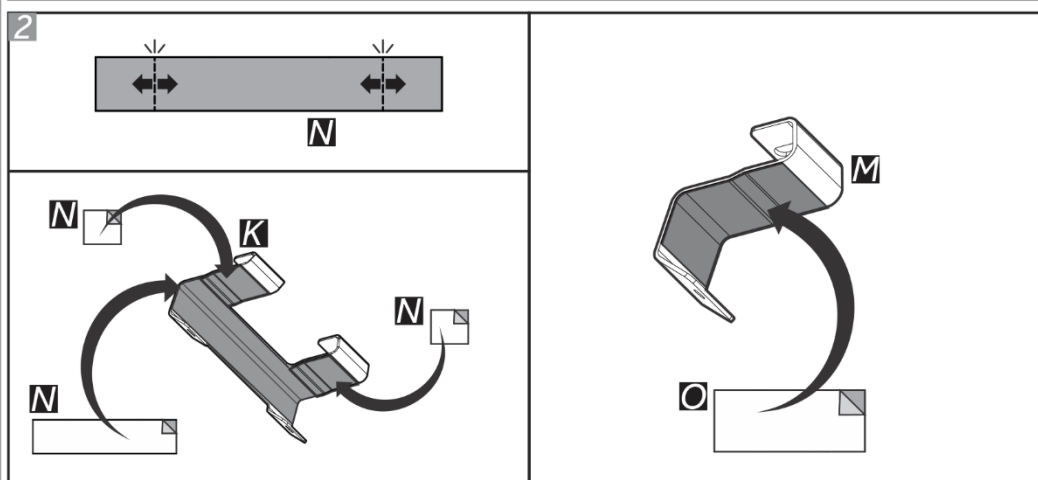


Torquemeter with 10y 13

Ford Factory Shop Manual purchase options www.motorcraftservice.com

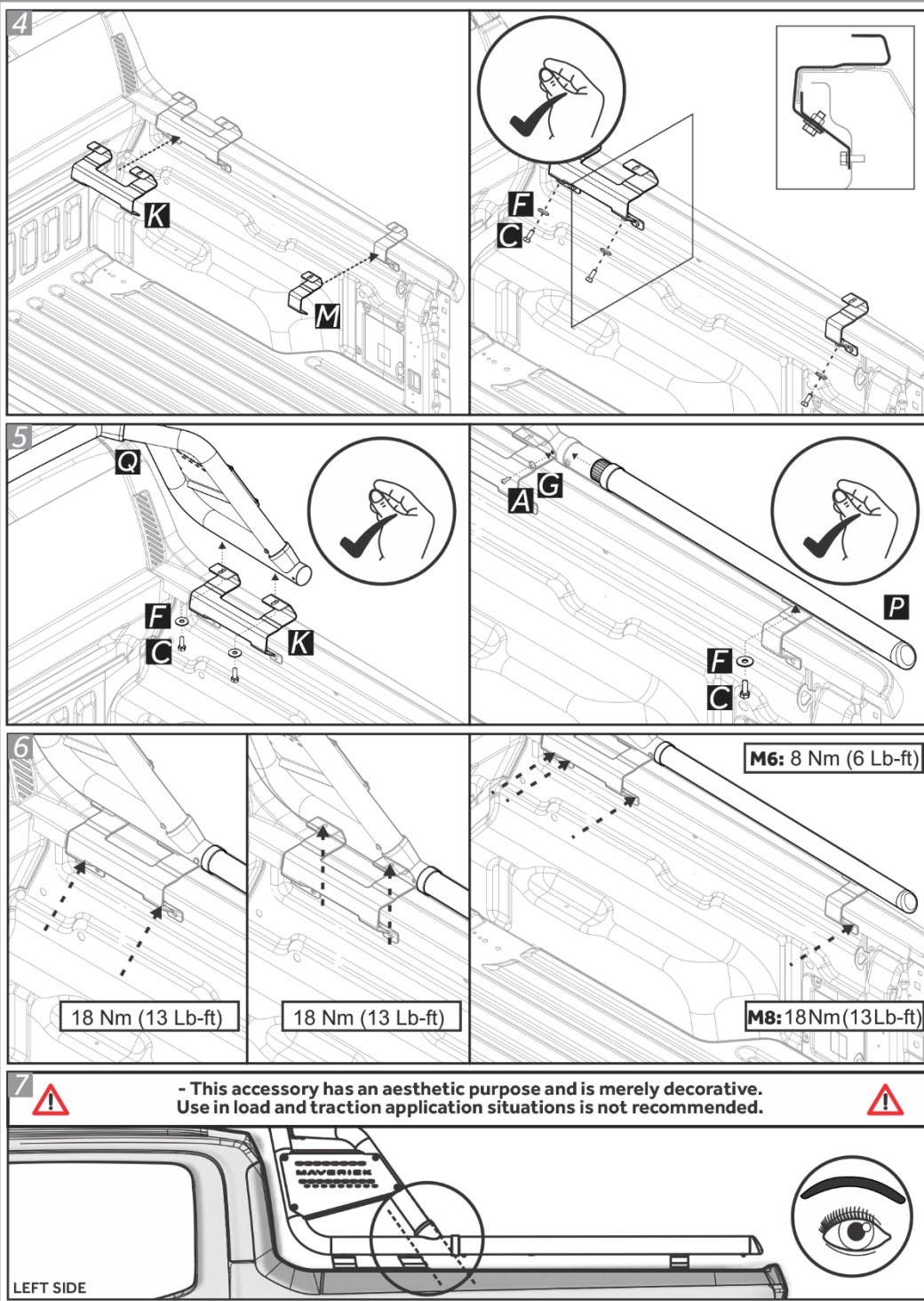


INSTALLATION INSTRUCTIONS



NO PART OF THIS DOCUMENT MAY BE REPRODUCED WITHOUT PRIOR AGREEMENT AND WRITTEN PERMISSION OF
FORD PERFORMANCE PARTS © Ford Motor Company 2020

INSTALLATION INSTRUCTIONS



Ford Factory Shop Manual purchase options www.motorcraftservice.com