



FORD PERFORMANCE

M-5200-SHOTC
Model 2017 →
Taurus SHO Cat Back Exhaust

NO PART OF THIS DOCUMENT MAY BE REPRODUCED WITHOUT PRIOR AGREEMENT AND WRITTEN PERMISSION OF
FORD PERFORMANCE PARTS © Ford Motor Company 2020

PRIOR TO INSTALLATION READ THESE INSTRUCTION COMPETELY
For questions, Call the FORD PERFORMANCE Techline 1-800-367-3788

Please visit <https://www.performanceparts.ford.com> for warranty information

KIT INCLUDES:

<u>Qty:</u>	<u>Description</u>
2	Rear Muffler
1	Front Muffler
8	Clamp
1	Left Hand Intermediate Pipe
1	Right Hand Intermediate Pipe

Ford Factory Shop Manual purchase options www.motorcraftservice.com



FORD PERFORMANCE

M-5200-SHOTC
Model 2017 →
Taurus SHO Cat Back Exhaust

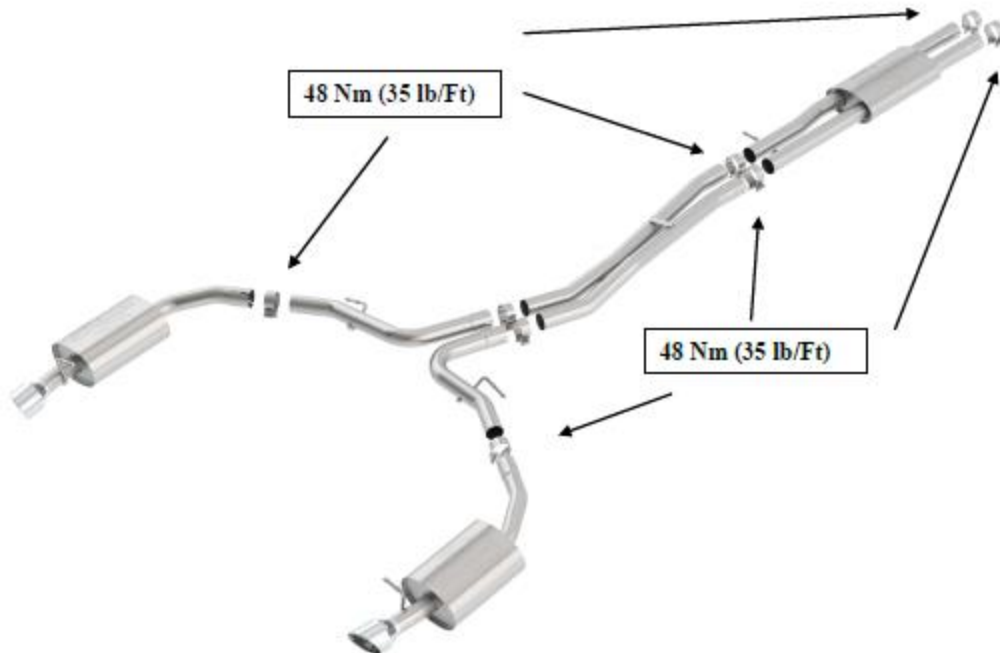
NO PART OF THIS DOCUMENT MAY BE REPRODUCED WITHOUT PRIOR AGREEMENT AND WRITTEN PERMISSION OF FORD PERFORMANCE PARTS © Ford Motor Company 2020

Image of New Cat Back Exhaust System:



Tighten the exhaust clamp.

- The exhaust clamp should be installed so that it is up to, but not over, the bottom of the notches.
- Tighten to 48 Nm (35 lb-ft).



Ford Factory Shop Manual purchase options www.motorcraftservice.com



FORD PERFORMANCE

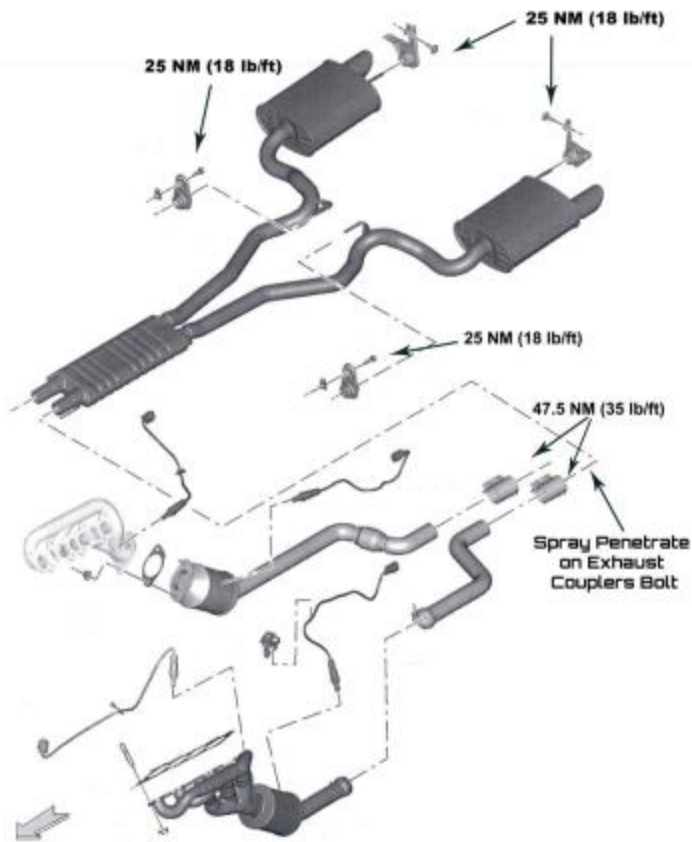
M-5200-SHOTC
Model 2017 →
Taurus SHO Cat Back Exhaust

NO PART OF THIS DOCUMENT MAY BE REPRODUCED WITHOUT PRIOR AGREEMENT AND WRITTEN PERMISSION OF FORD PERFORMANCE PARTS © Ford Motor Company 2020

INSTALLATION INSTRUCTIONS:

STEP 1: Raise and support vehicle.

STEP 2: Spray penetrating oil on exhaust coupler bolts. Loosen all exhaust coupler bolts.



Ford Factory Shop Manual purchase options www.motorcraftservice.com

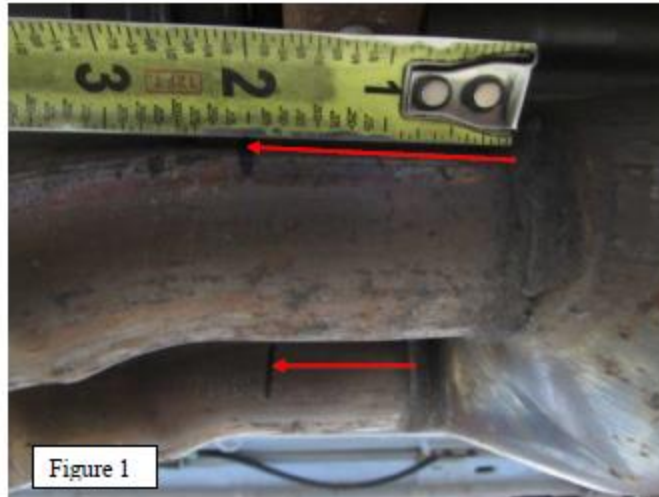


FORD PERFORMANCE

M-5200-SHOTC
Model 2017 →
Taurus SHO Cat Back Exhaust

NO PART OF THIS DOCUMENT MAY BE REPRODUCED WITHOUT PRIOR AGREEMENT AND WRITTEN PERMISSION OF FORD PERFORMANCE PARTS © Ford Motor Company 2020

STEP 3: Measure from the front muffler 2" and mark a line on both sides and cut it using a reciprocating saw with a metal-cutting blade. (See Fig. 1)



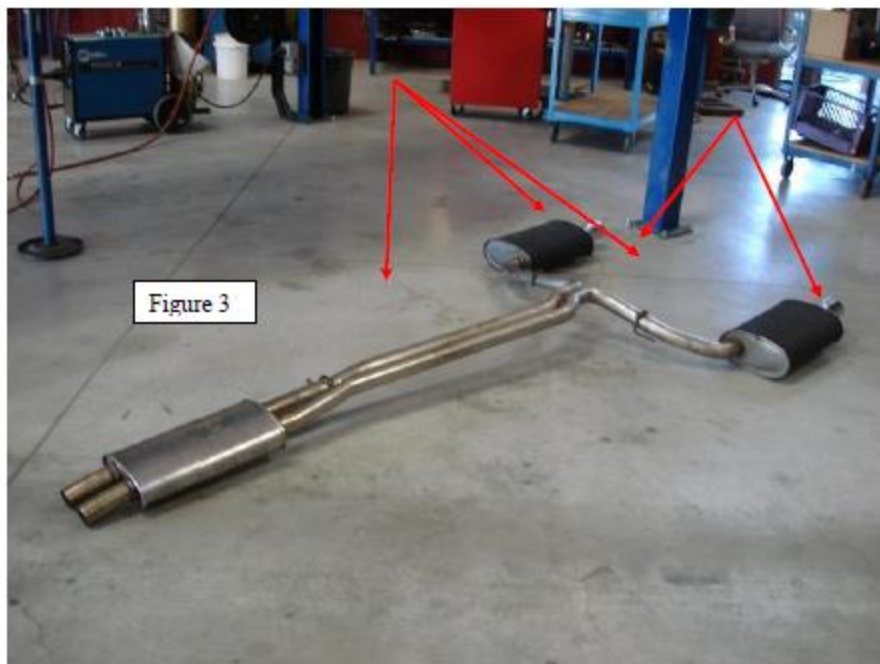
STEP 4: Lubricate all hangers and remove from rubber isolators. (See Fig. 2)



Ford Factory Shop Manual purchase options www.motorcraftservice.com

NO PART OF THIS DOCUMENT MAY BE REPRODUCED WITHOUT PRIOR AGREEMENT AND WRITTEN PERMISSION OF FORD PERFORMANCE PARTS © Ford Motor Company 2020

Step:5 Use a muffler stand or an additional person to remove the exhaust system from the vehicle.
(See Fig. 3)



Ford Factory Shop Manual purchase options www.motorcraftservice.com

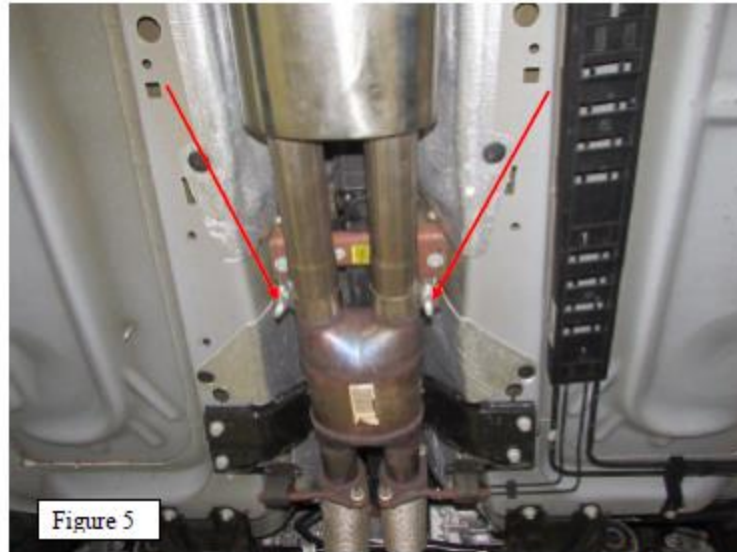


FORD PERFORMANCE

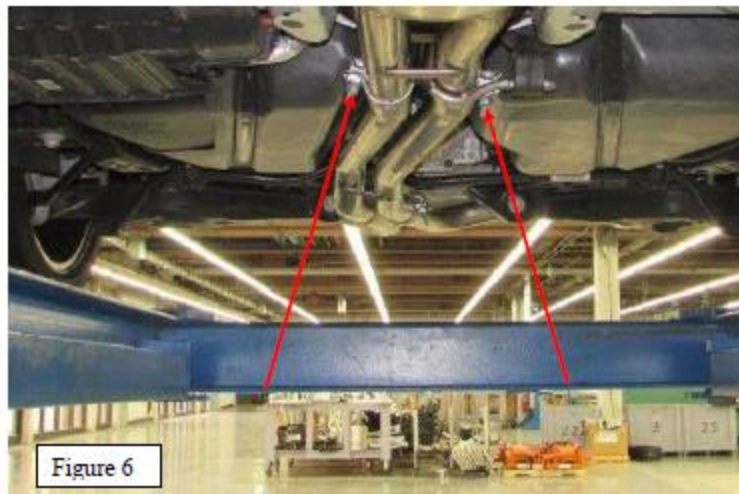
M-5200-SHOTC
Model 2017 →
Taurus SHO Cat Back Exhaust

NO PART OF THIS DOCUMENT MAY BE REPRODUCED WITHOUT PRIOR AGREEMENT AND WRITTEN PERMISSION OF FORD PERFORMANCE PARTS © Ford Motor Company 2020

Step 6: Place two clamps over the expanded end of the front muffler assembly. (See Fig. 5)



Step 7: Place two clamps over the expanded end of the intermediate pipe assembly. Install the intermediate pipes over the front muffler assembly making sure to install the hangers into the rubber isolators. (See Fig.6)



Ford Factory Shop Manual purchase options www.motorcraftservice.com



FORD PERFORMANCE

M-5200-SHOTC
Model 2017 →
Taurus SHO Cat Back Exhaust

NO PART OF THIS DOCUMENT MAY BE REPRODUCED WITHOUT PRIOR AGREEMENT AND WRITTEN PERMISSION OF FORD PERFORMANCE PARTS © Ford Motor Company 2020

Step 8: Place clamp over R/H muffler assembly and place over passenger-side pipe. Repeat for L/H muffler assembly. (See Fig 7)



Step 9: Pay close attention to the proximity of the exhaust tip to the fascia. There should be even clearance all the way around the tip. (See Fig. 8)



Ford Factory Shop Manual purchase options www.motorcraftservice.com

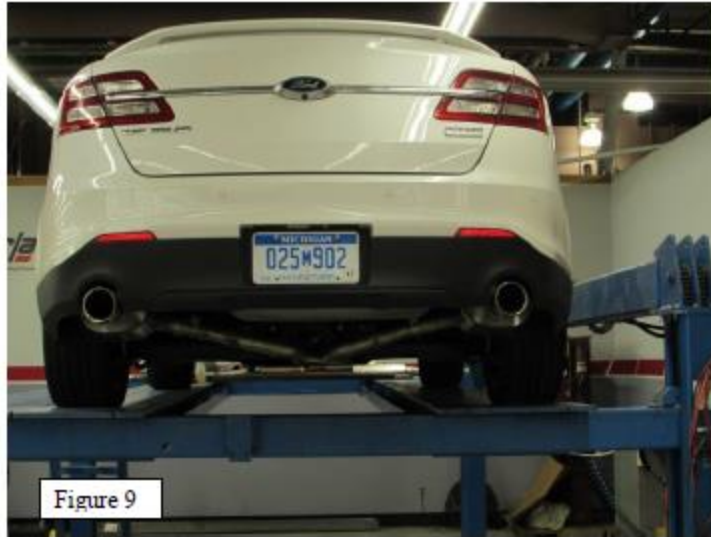


FORD PERFORMANCE

M-5200-SHOTC
Model 2017 →
Taurus SHO Cat Back Exhaust

NO PART OF THIS DOCUMENT MAY BE REPRODUCED WITHOUT PRIOR AGREEMENT AND WRITTEN PERMISSION OF FORD PERFORMANCE PARTS © Ford Motor Company 2020

Step 10: Before starting your vehicle, make sure to check all wires, hoses, brake lines, body parts and tires for safe clearance from the exhaust system. (See Fig. 9)



STEP: 11 Once the position has been determined to be correct, tighten the Accuseal™ clamp to 32-35 ft. lbs. making sure the clamp's openings are not over any of the notches in the pipes.

STEP: 12 Start vehicle and check for any leaks. If any leaks are found, determine cause (such as loose hardware or incorrectly positioned clamp) and repair as necessary.

Ford Factory Shop Manual purchase options www.motorcraftservice.com