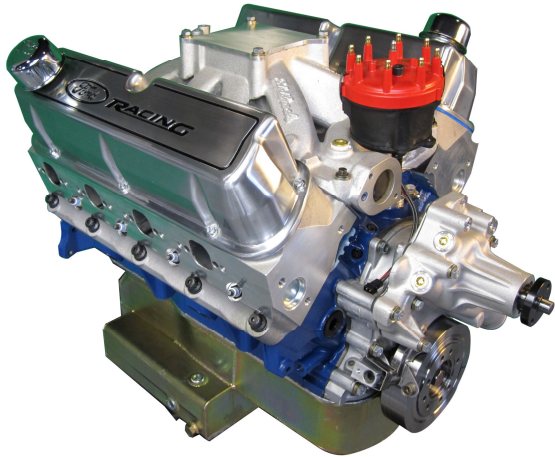




New for 2010
S374W - 540 HP
S374D - 590 HP
 Factory engineered and tested to take sealed engine racing to a new level of performance

S374W Sealed Racing Engine



M-6007-S374W
 Horsepower - 540 @ 7000 RPM
 Torque - 470 lb.ft. @ 5100 RPM

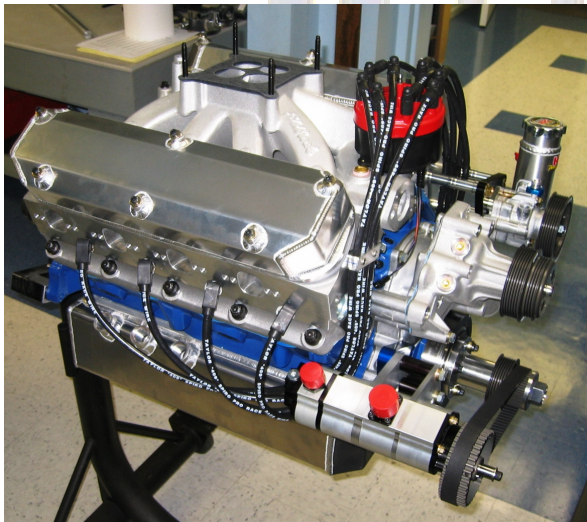
TRUE BLUE.

Real POWER
Real PERFORMANCE
Real SUBSTANCE

Real RACING ENGINES

Ford Racing offers factory engineered parts for the Sportsman Circle Track racer. Ford Sealed Racing Engines are built to professional racing series standards and deliver reliable lasting performance. These aren't built from repackaged production parts - but real racing parts like Forged Crank, Rods and Pistons with full floating piston pins. S374 Series engines are built with a BOSS Racing Block, CNC Ported Z-Heads and premium aftermarket components - these are **REAL RACING ENGINES**

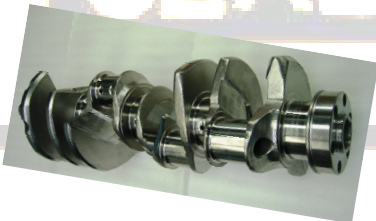
S374D Sealed Racing Engine



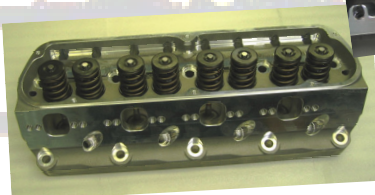
Horsepower - 590 @ 7000 RPM
 Torque - 520 lb.ft. @ 5200 RPM



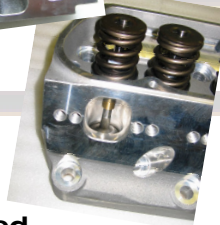
Ford Racing BOSS 351 Block



Crankshaft: Eagle Forged Steel



Z304P - Full CNC Ported



**Eagle H-Beam Rods
 Mahle Pistons**

Factory engineered and tested to take sealed engine racing to a new level of performance

Follow the development of the S374 Engines at www.fordracingparts.com/circletrack



S374W
"BIG Blue Oval"



S374D
"SUPER Blue Oval"

Available July 2010

		Ford Racing BOSS 351	Ford Racing BOSS 351
BLOCK	Block	Ford Racing BOSS 351	Ford Racing BOSS 351
	Bore diameter/Deck height	4.125"/9.200"	4.125"/9.200"
	Material	Iron	Iron
CRANK	Stroke	3.500"	3.500"
	Material	Forged Steel	Forged Steel
	Crankshaft manufacturer	Eagle	Callies
RODS	Material	H Beam Steel	H Beam Steel
	Connecting rod mfg.	Eagle	Callies
PISTON	Bore	4.125"	4.125"
	Piston part number	FRP245125F06	FRP245125F06
	Piston material	4032 Forged aluminum	4032 Forged aluminum
	Piston mfg.	Mahle	Mahle
CYLINDER HEAD	Head material	Aluminum	Aluminum
	Head part number	CM-6049-Z304PA	CM-6049-Z304PA
	Intake Valve Head Diameter	2.080"	2.080"
	Exhaust valve head diameter	1.600"	1.600"
	Valve spring part number	COMP 919	COMP 919
	Valve spring installed height	1.900"	1.900"
	Valve spring closed pressure	220 lbs.	220 lbs.
	Valve spring open pressure	550 @1.300"	550 @1.300"
	Retainers	Steel 10°- COMP	Steel 10°- COMP
CAMSHAFT	Camshaft type	COMP- Solid Roller Tappet	COMP- Solid Roller Tappet
	Duration @ .050 Intake	258°	260°
	Duration @ .050 Exhaust	266°	262°
	Valve lift intake	0.543"	0.695"
	Valve lift exhaust	0.543"	0.695"
	Rocker arm part number	M-6564-F351	M-6564-F351
	Rocker arm ratio	1.65:1	1.65:1
OIL & IGNITION	Oil Pan	Steel - 7 quart	Aluminum Dry Sump
	Oil Pump	Melling - Adjustable	Dailey 4-stage external
	Distributor	MSD Billet	MSD Billet
	Water Pump	Ford Racing	Ford Racing
	Front drive	None	KRC Water & Oil pump drive

Want to learn more about Ford Sealed Racing Engines
Contact Ford Racing Sportsman Circle Track Program Manager Mike Delahanty
Office 313-845-1995 email mdelaha3@ford.com